



# FOLLOW THE TIME TO CONNECT ART TRAIL

DISCOVER SIX UNIQUE SCULPTURES  
AT SIX NOTTINGHAMSHIRE VENUES

# WHAT'S IT

## IT ALL **STARTED** WITH ALISTAIR MORRISON



Alistair Morrison is a prominent British photographer whose work is included in the Primary Collection of The National Portrait Gallery, London, with over 80 pieces on display. For the past 40 years he has worked alongside some of the most notable international icons and dignitaries. His portraits are collected by private and corporate clients worldwide and he has exhibited in Paris, New York, Palm Beach, Miami, Florence, Berlin, Barcelona and London.

[alistairmorrison.com](http://alistairmorrison.com)

## TIME TO CONNECT

A five year journey will take him around the UK in a converted camper van, which also doubles as a mobile studio, to capture a portrait of the UK, post Brexit, post pandemic, in all its richness and diversity across all 100 counties. The journey is being captured using photography, film, podcasts and other creative mediums.

**NOTTINGHAMSHIRE HAS BEEN THE CATALYST FOR THIS PROJECT, LAUNCHING THE FIRST TIME TO CONNECT JOURNEY.**



**THE VIEW FROM  
THE CAMPER VAN**

Morrison is leaving a lasting legacy by connecting with local creatives of all types, who are commissioned to create beautiful pieces of art in each county.

[@timetconnectttc](https://www.instagram.com/timetconnectttc)

# ABOUT?

## CONNECTING WITH NOTTS

In Nottinghamshire, Morrison worked with Inspire: Culture, Learning and Libraries and Miner2Major to create a project that connects artists, venues and community groups to help leave a legacy of Time to Connect artworks in 6 key locations across Sherwood Forest.

**Each Nottinghamshire artwork will be connected by the words:**

# TAKE 'TIME TO CONNECT' WITH THIS PLACE AND WITH EACH OTHER.



**Inspire**

Culture | Learning | Libraries

Inspire - a charitable community benefit society who deliver cultural and learning services across Nottinghamshire. Their mission: "To inspire people to read, learn and enjoy culture".

[inspireculture.org.uk](http://inspireculture.org.uk)



## DID YOU KNOW?

Alistair was the first to photograph Kate Winslet when she was 18 years old!



**Miner2Major**  
The Real Sherwood Forest



Made possible with

**Heritage  
Fund**

Miner2Major - a Landscape Partnership Scheme supported by the National Lottery Heritage Fund celebrating the important habitats, special species and rich heritage of Sherwood Forest.

[miner2major.org.uk](http://miner2major.org.uk)



# ABOUT THE



## MANDY KEATING

Mandy Keating is a visual artist who enjoys using paper-based materials to create 2D and 3D collages and digital art, reusing or reimagining found objects or discarded materials. Through her socially engaged practice she collaborates with people to find new ways to tell a story visually, whether heritage, social history or pure fiction.

Her own art gives audiences the chance to immerse themselves in the story she tells, to smile, to enjoy, to be curious.

**PROJECT ROLE: WORKING WITH GROUPS TO CREATE SITE SPECIFIC DRAWINGS**



## TRACEY MEEK

Tracey Meek is a multidisciplinary artist working with a range of mediums; painting, ceramics and immersive installation. Her work is intuitive in process and content, a tactile extension of herself and reflection of surroundings.

With a playful, experimental approach that translates into community engagement, Tracey enjoys finding interesting new ways of sharing creative process through interaction and intervention.

**PROJECT ROLE: WORKING WITH GROUPS TO CREATE SITE SPECIFIC DRAWINGS**

---

**THIS PROJECT WAS DELIVERED AS PART OF THE BIG DRAW 2023.**

For more information visit: [thebigdraw.org](https://thebigdraw.org)



# ARTISTS



SCULPTURES  
IN PROGRESS

PHOTOS OF CHRIS CAMPBELL AND  
HIS WORKSHOP BY NEIL PLEDGER



## CHRIS CAMPBELL

Chris Campbell is an artist and sculptor involved in creating innovative and challenging artworks and installations for both private and public spaces.

He is a firm advocate of engaging with people and communities through art, encouraging them to participate and actively contribute to changing and enhancing their immediate environment.

### PROJECT ROLE: MAKING SCULPTURES INSPIRED BY THE GROUPS' DRAWINGS



## OUR YOUNG ARTISTS GROUPS & LOCATIONS

**BESTWOOD COUNTRY PARK**

28th Nottingham Boys Brigade  
and Girls Association

**PAPPLEWICK PUMPING STATION**

Beardall Fields Primary & Nursery School

**NEWSTEAD ABBEY**

Newstead Primary School

**VICAR WATER COUNTRY PARK**

1st Clipstone Beavers, Cubs and Scouts

**RUFFORD ABBEY COUNTRY PARK**

Bilthorpe Flying High Academy

**RSPB SHERWOOD FOREST  
NATIONAL NATURE RESERVE**

2nd Edwinstowe Rainbows and Brownies

# BESTWOOD COUNTRY PARK

Bestwood Country Park, Park Rd,  
Bestwood Village NG6 8TQ

[fbcp.org.uk](http://fbcp.org.uk)



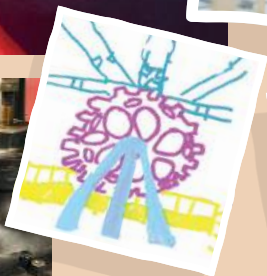
## THE SCULPTURE

THE SCULPTURE ENCAPSULATES A COMBINATION OF THE DRAWINGS ABOUT BESTWOOD'S PAST MINING HERITAGE AND CONTEMPORARY ROLE IN SUPPORTING THE NATURAL ENVIRONMENT.



Chris made a maquette before making the final sculpture.

PHOTO BY NEIL PLEDGER



Drawings by members of the 28th Nottingham Boys Brigade and Girls Association, taken from the Winding Engine House.



# THE LOCATION

## SAT NAV TO WINDING ENGINE HOUSE CAR PARK: NG6 8ZA

From the Winding Engine House Car Park, go through the gate that leads into the park. Follow the path to the right towards the **Dynamo House and Winding Engine House**. There is a black metal fence that surrounds these two buildings - find the gate in front of the **Dynamo House** and you have found the Time to Connect sculpture!



## DID YOU KNOW

### THESE BESTWOOD COUNTRY PARK FACTS?

The park and surrounding area was once a hunting ground of 3,711 acres, part of the medieval Sherwood Forest, which covered large areas of Nottinghamshire.

The winding engine dates back to 1876.

Bestwood Colliery was one of the busiest coal mines in Nottinghamshire.

In 1967, the coal mine fell silent.

In 1973 the formation of the current Country Park began.

### WHAT3WORDS

[logo.stand.arrive](https://www.what3words.com/stand/arrive)

### THE NEAREST OTHER LOCATIONS

**5 miles** Papplewick Pumping Station

**6 miles** Newstead Abbey

**12 miles** Vicar Water Country Park



Nottinghamshire  
County Council

# PAPPLEWICK PUMPING STATION

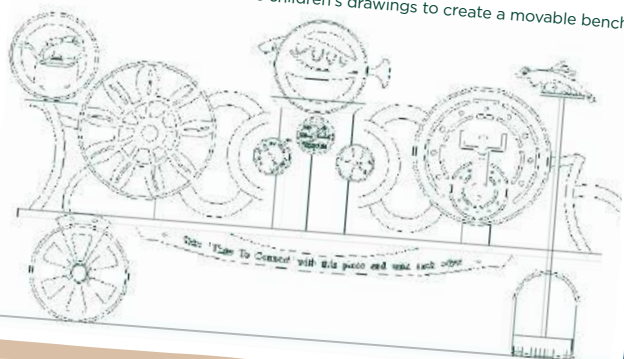
Papplewick Pumping Station,  
Rigg Lane, Ravenshead NG15 9AJ  
[papplewickpumpingstation.org.uk](http://papplewickpumpingstation.org.uk)



CONNECTING  
WITH THE DETAIL

## THE SCULPTURE

Initial design by Chris using the children's drawings to create a movable bench.

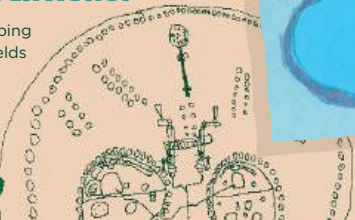


**STUDENTS OF BEARDALL  
FIELDS PRIMARY & NURSERY  
SCHOOL DREW THE FASCINATING  
ARCHITECTURAL STRUCTURES  
OF THE ENGINE ROOM AND  
THE BRILLIANT VICTORIAN  
ENGINEERING IN THE BOILER  
HOUSE WHILST LEARNING ABOUT  
MR. HAWKSLEY'S INVENTIONS.**

Right: Drawings of Papplewick Pumping Station by children from Beardall Fields Primary & Nursery School.



PHOTO BY NEIL PLEDGER





# THE LOCATION

From the **Main Visitor Car Park**, cross over Rigg Lane through the gates and onto the driveway.

The **Visitor Centre** will be on your right, go past and take the next left along a path that leads to the **Engine Room**.

The **Cooling Pond** will be on your left. Go past the entrance to the **Engine Room** and follow the path around the building to the right. This will lead you to the **Greenhouse Garden**. You have found the sculpture!

## WHAT3WORDS

octagon.covenants.roadmap

## THE NEAREST OTHER LOCATIONS

**4 miles** Newstead Abbey

**5 miles** Bestwood Country Park

**10 miles** Rufford Abbey Country Park

\* Main car park operates during steam events.  
Refer to the website for full opening information.



**CONNECT WITH ART**  
Find and draw a detail of the pumping station.

# MAP

## CONNECT THE LOCATIONS

**WHERE HAVE YOU VISITED?**

- BESTWOOD COUNTRY PARK
- PAPPLEWICK PUMPING STATION
- NEWSTEAD ABBEY
- VICAR WATER COUNTRY PARK
- RUFFORD ABBEY COUNTRY PARK
- RSPB SHERWOOD FOREST





RSPB SHERWOOD FOREST Pg18



OLLERTON

EDWINSTOWE

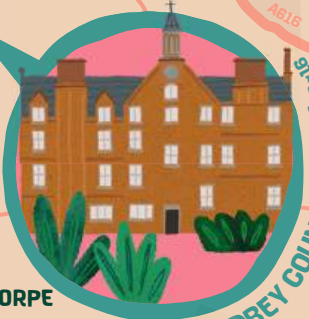


LAXTON

CLIPSTONE



BILSTHORPE



RUFFORD ABBEY COUNTRY PARK

RAINWORTH



PAPPLEWICK PUMPING STATION Pg8

FARNSFIELD



HOCKERTON

SOUTHWELL



OXTON

OLD COUNTRY PARK Pg6



WOODBOROUGH

GONALSTON

LOWDHAM

THURGARTON



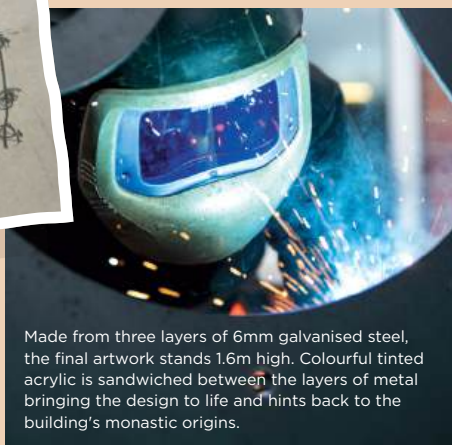
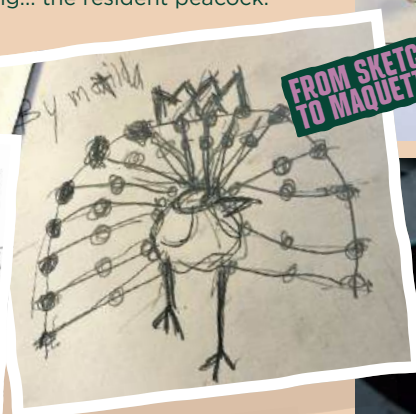
# NEWSTEAD ABBEY

Newstead Abbey,  
Ravenshead NG15 8NA  
[newsteadabbey.org.uk](http://newsteadabbey.org.uk)

## THE SCULPTURE

NEWSTEAD PRIMARY SCHOOL  
CHILDREN DREW THE ABBEY  
WITH A LITTLE HELP FROM  
ARTISTS MANDY AND TRACEY.

They all focussed on the marvellous  
medieval facade of the surviving West  
Front along with the cloisters and chapel  
surrounded by original stone carvings.  
Not forgetting... the resident peacock.



Made from three layers of 6mm galvanised steel, the final artwork stands 1.6m high. Colourful tinted acrylic is sandwiched between the layers of metal bringing the design to life and hints back to the building's monastic origins.



# THE LOCATION

## SAT NAV TO ENTRANCE OFF THE A60: NG15 9HJ

Face the West Front of the Abbey and turn right towards the entrance to the gardens. Go around the building, the **Café and Toilets** will be on your left. Turn left down the path. Continue along this path with the **Abbey** on your left and the **Abbey Lawn** and **Byron's Oak** to your right. You will reach the **Stew Pond** on your right. Continue straight down this path until you get to the **Small Walled Garden**, turn right and head for the sun dial in the centre, you should be facing the entrance to the **Large Walled Garden**, go through the entrance and head towards the water fountain in the centre. Turn right and go towards the wall. You have found the Time to Connect sculpture!

### WHAT3WORDS

carting.cutaway.slanting

### THE NEAREST OTHER LOCATIONS

**4 miles** Papplewick Pumping Station

**6 miles** Bestwood Country Park

**9 miles** Vicar Water Country Park



Newstead Abbey

# DID YOU KNOW

## THIS NEWSTEAD ABBEY FACT?

A peacock's call can be heard up to 5 miles away and they're at their noisiest from March to July.

# VICAR WATER COUNTRY PARK



Vicar Water Country Park,  
Clipstone, Mansfield NG21 9AA  
[newark-sherwooddc.gov.uk/vicarwater](http://newark-sherwooddc.gov.uk/vicarwater)

## THE SCULPTURE

THE 1<sup>ST</sup> CLIPSTONE SCOUT GROUP LEARNED ABOUT AND DREW THE SPECIAL SPECIES THAT OCCUPY THE FORMER COLLIERY SITE, WHERE HEATHLAND, WOODLAND AND GRASSLAND ARE NOW A DESIGNATED LOCAL NATURE RESERVE.

Collages by the 1st Clipstone  
Beavers, Cubs and Scouts.



Time to Connect artwork combines the heritage and wildlife of the site, and makes for an impressive towering structure.



## THE LOCATION

From the **Visitor Car Park Pay Station** turn right along the path heading into the park. You will reach another path, turn right then take the first path on your left. Follow this uphill until it meets a junction, turn left and follow it round to the right. Keep straight ahead, the path will join another but go straight on. You will come to a narrow path on your right, you can either take this straight up to the **Viewpoint** or carry on along a wider path that curves around up to the **Viewpoint**. Once you reach the top of the hill, you have found the Time to Connect sculpture!

### WHAT3WORDS

**nimbly.vague.simulates**

### THE NEAREST OTHER LOCATIONS

**5 miles** RSPB Sherwood Forest

**5 miles** Rufford Abbey Country Park

**9 miles** Newstead Abbey

## DID YOU KNOW

### THESE VICAR WATER COUNTRY PARK FACTS?

We have planted 4000 new trees to create a mixed broadleaved woodland providing benefits for people, wildlife and the landscape. As part of the Queen's Green Canopy, the new wood has been called 'Platinum Jubilee Woods' in tribute to Her Majesty.

The pond, stream and lake at Vicar Water all provide homes and food for a variety of wildlife. You'll find birds including kingfishers, herons, grebes and tufted ducks as well as water scorpions, frogs and newts, emperor dragonflies, common darters and more.



**NEWARK & SHERWOOD**  
DISTRICT COUNCIL

# RUFFORD ABBAY COUNTRY PARK

Rufford Abbey Country Park,  
Ollerton NG22 9DF  
[ruffordabbey.co.uk](http://ruffordabbey.co.uk)



## THE SCULPTURE

BILSTHORPE FLYING HIGH ACADEMY DREW THE FLORA AND FAUNA OF RUFFORD PARK. THEY HAD FUN DOING WARM UP ACTIVITIES SUCH AS CONTINUOUS LINE DRAWINGS, USING PENCILS ON LONG STICKS AND DRAWING WITH THE OPPOSITE HAND.



Chris made a model out of wood to help choose each of the elements.



The children used the drawings to make collage postcards.



PHOTO BY NEIL PLEGER



# THE LOCATION

From the **Main Visitor Car Park** go along the path towards the **Stable Block**. Go through the **Courtyard** passing the **Shop** on the left and the **Toilets** under the arch. The **Coach House Café** will be on your right. Go straight ahead towards the brick archway and follow either the ramp or the steps towards the gardens. The **Orangery** will be on your right, go past and head towards the gated entrance of the **Sculpture Gardens**, turn first left and go along the path until you come to a circular planted border. Turn right and follow the path around the circle until you reach the entrance on your left. You have found the Time to Connect sculpture!



## CONNECT WITH NATURE

Can you find 6 examples of patterns in nature?

1. \_\_\_\_\_

2. \_\_\_\_\_

3. \_\_\_\_\_

4. \_\_\_\_\_

5. \_\_\_\_\_

6. \_\_\_\_\_

### WHAT3WORDS

quaking.operated.always

### THE NEAREST OTHER LOCATIONS

- 2 miles** RSPB Sherwood Forest
- 5 miles** Vicar Water Country Park
- 10 miles** Papplewick Pumping Station



# RSPB SHERWOOD FOREST

RSPB Sherwood Forest, Forest Corner,  
Edwinstowe, Mansfield NG21 9RN  
[visitsherwood.co.uk](http://visitsherwood.co.uk)



## THE SCULPTURE

THE 2<sup>ND</sup> EDWINSTOWE RAINBOWS AND BROWNIES DISCOVERED THE ANCIENT NATURE WITHIN THE HEART OF SHERWOOD FOREST. FROM FALLEN OAK LEAVES TO LITTLE LADYBIRDS, THEY ENJOYED DRAWING THE NATURE ON THEIR DOORSTEP THROUGH FUN DRAWING GAMES.

PHOTO BY NEIL PLEDGER



Sculptor Chris chose a selection of these energetic leaf drawings and created a wild wooden bench where families can take time out to connect with the surrounding woodland.



## THE LOCATION

### SAT NAV TO THE CAR PARK: NG21 9QB

From the **Main Visitor Car Park** cross over Swinecote Road and head towards the **Visitor Centre**. Go through the centre and there is a curved path leading down to the **Amphitheatre**. Turn left and follow the signs for the **Major Oak Trail**, this will take you into the forest. Keep on the path, once you reach a crossroads in the path, you have found the Time to Connect sculpture!

### WHAT3WORDS

**ounce.wires.slightly**

### THE NEAREST OTHER LOCATIONS

**2 miles** Rufford Abbey Country Park

**5 miles** Vicar Water Country Park

**12 miles** Papplewick Pumping Station



**SHERWOOD  
FOREST**

WHERE LEGENDS GROW

## CONNECT WITH THE FOREST

Close your eyes and listen  
to the sounds of the forest.  
What can you hear?

---



---



---



---



---



---



---





DESIGN AND ILLUSTRATION BY HIROCREATES.CO.UK

# TIME TO CONNECT ART TRAIL NOTTINGHAMSHIRE

BROUGHT TO YOU IN PARTNERSHIP WITH...



**Miner2Major**  
The Real Sherwood Forest



Made possible with

**Heritage Fund**



**Nottinghamshire County Council**

delivered by



**Inspire**  
Culture | Learning | Libraries



Supported using public funding by

**ARTS COUNCIL ENGLAND**

